

PROTECTING THOSE WHO PROTECT US

# PRODUCT CATALOG

WESTINPUBLICSAFETY.COM



**WESTIN®**  
Public Safety Division

XTREME DUTY

# PUSH BUMPER - ELITE **XD** -

WITH OPTIONAL WING WRAPS, PIT BAR AND WINCH TRAY



The Push Bumper EliteXD is made of heavy duty 4 gauge HRPO steel uprights to safely push another vehicle. It features 2-3/4" wide heavy-duty rubber strips on the uprights and a removable full punch plate grille. Uprights are pre-drilled for the addition of Elite Wing Wraps and PIT Bar Elite. Pre-drilled holes provide side-mounting points for popular LED Lights. The Push Bumper EliteXD also features an extra wide 4-5/8" stylized and pre-drilled center cross-plate with a significant surface area for top-mounting of LED lights or speakers. All exposed fasteners are black plated stainless for protection against rust. The Push Bumper EliteXD designs are vehicle specific for a clean finished look.

# PUSH BUMPER ELITE<sup>XD</sup>

WITH OPTIONAL WING WRAPS, PIT BAR AND WINCH TRAY



Winch Tray



Fits most medium frame  
8,000-12,000 lbs.  
winches (up to 10-1/4" tall)

2015-17 FORD F150



Push Bumper Part No. 36-52065  
Wing Wraps Part No. 36-52065W

2016-17 CHEVY SILVERADO



Push Bumper Part No. 36-53685  
Wing Wraps Part No. 36-53685W

2015-17 CHEVY TAHOE



Push Bumper Part No. 36-53805  
Wing Wraps Part No. 36-53805W

2013-17 RAM



Push Bumper Part No. 36-53545  
Wing Wraps Part No. 36-53545W

## SPECIFICATIONS:

Finish: E-coated / Black Powder Coat  
Material: HRPO Steel  
Visible Hardware: Black Plated Stainless Steel  
Warranty: 3 Year

START	END	MAKE	MODEL	PUSH BUMPER ELITE <sup>XD</sup> *	PIT BAR**	WING WRAPS**	WINCH TRAY**
2015	2017	Ford	F-150/SSV <sup>2</sup>	36-52065	N/A	36-52065W	46-23835
2015	2017	Ford	Expedition/SSV <sup>1,2</sup>	36-53865	36-53865PB	36-53865W	46-23865
2013	2017	Ram	Ram SSV 1500 <sup>2</sup>	36-53545	N/A	36-53545W	46-23755
2016	2017	Chevy	Silverado 1500 <sup>1,2</sup>	36-53875	N/A	36-53875W	46-23875
2014	2015	Chevy	Silverado 1500 <sup>2</sup>	36-53685	N/A	36-53685W	46-23685
2015	2017	Chevy	Tahoe/Suburban <sup>2</sup>	36-53805	36-53805PB	36-53805W	46-23805

### Footnotes:

- Trimming is required of tow hook plastic pockets.
- Tow hooks cannot be reused with winch tray applications.

\*Light channel required. Sold separately.

\*\*PIT Bar Elite, Elite Wing Wraps and Winch Tray sold separately.



FRONT-END PROTECTION

# PUSH BUMPER - ELITE -

BEST IN STRENGTH, DURABILITY AND PROTECTION



Westin's Public Safety Push Bumper Elite is made of heavy duty HRPO steel with 4 gauge uprights featuring 2-3/4" wide rubber strips. The Push Bumper Elite is designed with maximum safety features and options in mind. It offers customization for your agency's specific needs and provides the best in strength, durability, and protection. Choose a Light Channel to complete your Push Bumper Elite front-end protection unit, available in solid (no light openings), 2, 3 or 4 light options.

# PUSH BUMPER ELITE

BEST IN STRENGTH, DURABILITY AND PROTECTION



## ELITE UPRIGHT WIRE COVER SET



» Part No. 36-2005WC

## SPECIFICATIONS:

Finish: E-coated / Black Powder Coat

Light Channel: Sold Separately

Material: HRPO Steel

Visible Hardware: Black Plated Stainless Steel

Warranty: 3 Year

### 2017 FORD INTERCEPTOR UTILITY



36-2055

### 2015 FORD INTERCEPTOR UTILITY



36-2005  
Shown with optional  
PIT Bar Elite

### 2017 FORD INTERCEPTOR SEDAN



36-2015

### 2017 DODGE CHARGER



36-2035  
Shown with optional Elite Wing Wraps  
and PIT Bar Elite

START	END	MAKE	MODEL	PUSH BUMPER ELITE*
2016	2017	Ford	Interceptor Utility <sup>1</sup>	36-2055
2012	2015	Ford	Interceptor Utility <sup>1</sup>	36-2005
2013	2017	Ford	Interceptor Sedan	36-2015
2011	2017	Dodge	Charger Pursuit	36-2035
2007	2014	Chevy	Tahoe/Suburban	36-2025
2012	2017	Chevy	Caprice PPV	36-2045

\*Light Channel required. Sold separately.

#### Footnotes:

1. Elite Upright Wire Cover set available (PN#: 36-2005WC)



DESIGNED FOR MOST POPULAR PUBLIC SAFETY LIGHTS

# LIGHT CHANNEL - OPTIONS -

SOLID, 2, 3, OR 4 LIGHT  
LIGHTS NOT INCLUDED



Westin offers Light Channel options in solid (no light openings) as well as 2, 3 or 4 light configurations. They are designed for most popular public safety lights: SoundOff Signal (nForce Surface Mount), Code 3 (Chase and MR6), Federal Signal (IPX6-IMPAXX and Micro Pulse6), and Whelen (ION-SERIES). Light Channels include light specific brackets and hardware. One or more of these Light Channel options are sure to serve your agency's public safety lighting requirement.

# LIGHT CHANNEL OPTIONS

SOLID, 2, 3, OR 4 LIGHT / LIGHTS NOT INCLUDED

## SPECIFICATIONS:

Finish: E-coated / Black Powder Coat

Light Channel: Solid, 2, 3 or 4 Sold Separately

Material: 14 Gauge HRPO Steel

Visible Hardware: Custom Light Mount Brackets

Warranty: 3 Year

## SOLID

No Light Openings



SOLID | NO LIGHT OPENINGS



2017 FORD INTERCEPTOR SEDAN



## 2 LIGHT

Channel Option



WHELEN | ION-SERIES



2015 FORD INTERCEPTOR UTILITY



## 3 LIGHT

Channel Option



CODE 3 | CHASE



2017 FORD INTERCEPTOR UTILITY



## 4 LIGHT

Channel Option



FEDERAL SIGNAL | IPX6-IMPAXX



2017 CHEVY TAHOE



## PUSH BUMPER ELITE

START	END	MAKE	MODEL	PUSH BUMPER ELITE	NO LIGHT	SOUNDOFF SIGNAL (NFORCE SURFACE MOUNT)			CODE 3 (CHASE)			CODE 3 (MR6)		FEDERAL SIGNAL (IMPAXX)		FEDERAL SIGNAL (MICRO PULSE6)		WHELEN (ION-SERIES)	
					SOLID	2 LIGHT	4 LIGHT		2 LIGHT	3 LIGHT	4 LIGHT	2 LIGHT	4 LIGHT	2 LIGHT	4 LIGHT	2 LIGHT	4 LIGHT	2 LIGHT	4 LIGHT
2016	2017	Ford	Interceptor Utility	36-2055	36-6005	36-6005S2	36-6005S4		36-6005C2CH	36-6005C3CH	36-6005C4CH	36-6005C2MR6	36-6005C4MR6	36-6005F2	36-6005F4	36-6005F2MP	36-6005F4MP	36-6005W2	36-6005W4
2012	2015	Ford	Interceptor Utility	36-2005															
2013	2017	Ford	Interceptor Sedan	36-2015															
2011	2017	Dodge	Charger Pursuit	36-2035															
2012	2017	Chevy	Caprice PPV	36-2045															
2007	2014	Chevy	Tahoe/Suburban	36-2025	36-6015	36-6015S2	36-6015S4		36-6015C2CH	N/A	36-6015C4CH	36-6015C2MR6	36-6015C4MR6	36-6015F2	36-6015F4	36-6015F2MP	36-6015F4MP	36-6015W2	36-6015W4

## PUSH BUMPER ELITEXD

START	END	MAKE	MODEL	PUSH BUMPER ELITEXD	NO LIGHT	SOUNDOFF SIGNAL (NFORCE SURFACE MOUNT)			CODE 3 (CHASE)			CODE 3 (MR6)		FEDERAL SIGNAL (IMPAXX)		FEDERAL SIGNAL (MICRO PULSE6)		WHELEN (ION-SERIES)	
					SOLID	2 LIGHT	4 LIGHT		2 LIGHT	4 LIGHT		2 LIGHT	4 LIGHT	2 LIGHT	4 LIGHT	2 LIGHT	4 LIGHT	2 LIGHT	4 LIGHT
2015	2017	Ford	F-150/SSV	36-52065	36-6015	36-6015S2	36-6015S4		36-6015C2CH	36-6015C4CH		36-6015C2MR6	36-6015C4MR6	36-6015F2	36-6015F4	36-6015F2MP	36-6015F4MP	36-6015W2	36-6015W4
2015	2017	Ford	Expedition/SSV	36-53865															
2013	2017	Ram	Ram SSV 1500	36-53545															
2016	2017	Chevy	Silverado 1500	36-53875															
2014	2015	Chevy	Silverado 1500	36-53685															
2015	2017	Chevy	Tahoe/Suburban	36-53805															



TESTED & APPROVED BY MAJOR AGENCIES

# PIT BAR - ELITE -

THE UNIQUE PATENTED “DOUBLE BAR” DESIGN



Westin's PIT Bar Elite has been rigorously PIT tested and approved by major public safety agencies. The PIT Bar Elite is made of heavy duty 7 gauge HRPO steel horizontal bars and features two 2-3/4" wide rubber strips with plastic end caps for a clean finished look. It also features heavy duty HRPO steel reinforcing brackets for maximum strength. Westin's Public Safety PIT Bar Elite is designed to bolt directly to a Westin Push Bumper Elite or EliteXD at the upper bumper level for the best PIT maneuver possible.

US PATENT NO. D755,094 S

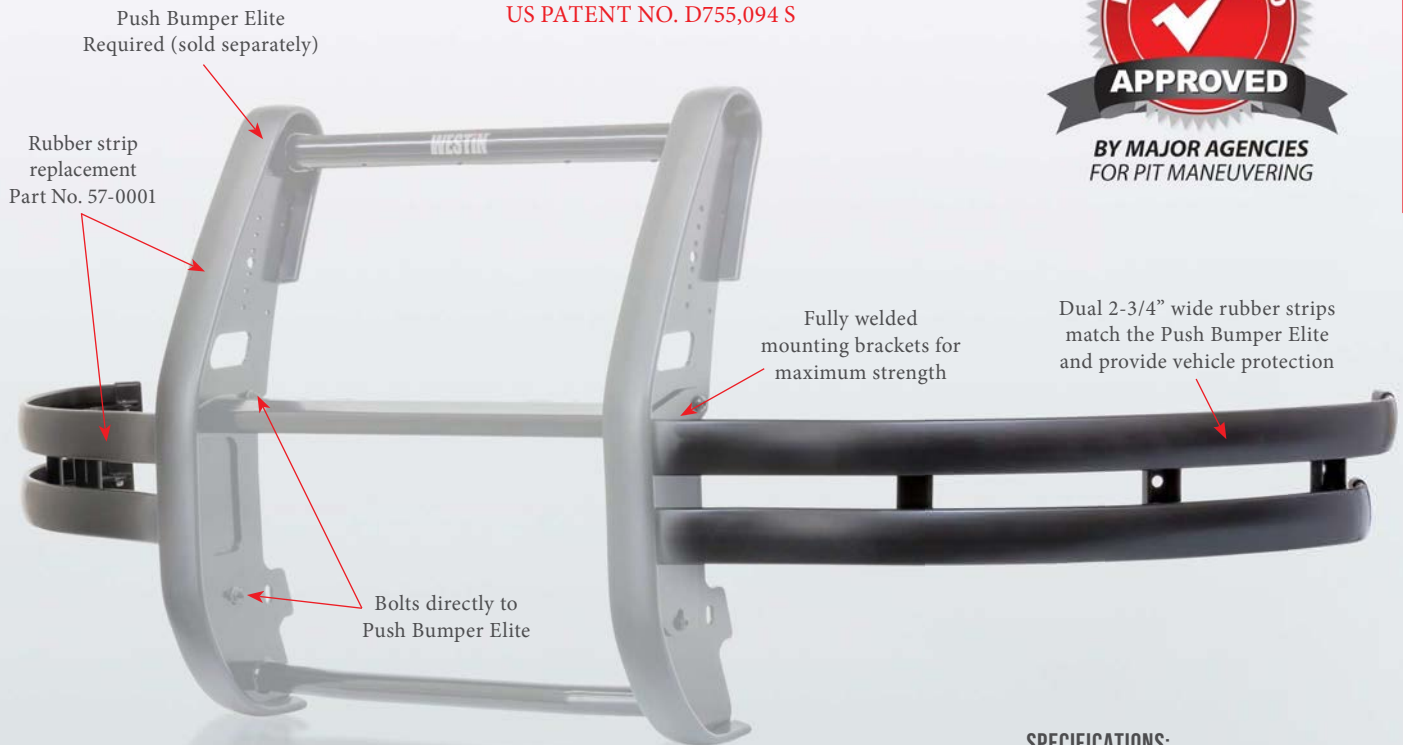


TESTED & APPROVED BY MAJOR AGENCIES

# PIT BAR ELITE

THE UNIQUE PATENTED "DOUBLE BAR" DESIGN

US PATENT NO. D755,094 S



## SPECIFICATIONS:

Finish: E-coated / Black Powder Coat  
Material: 7 Gauge HRPO Steel  
Visible Hardware: Black Plated Stainless Steel  
Warranty: 3 Year



Plastic end caps for a clean finished look



Heavy Duty reinforcing brackets



Bolts on to Push Bumper



Double curved profile encourages a smooth PIT

START	END	MAKE	MODEL	PUSH BUMPER ELITE	PIT BAR*
2016	2017	Ford	Interceptor Utility	36-2055	36-2055PB
2012	2015	Ford	Interceptor Utility	36-2005	36-2005PB
2013	2017	Ford	Interceptor Sedan	36-2015	36-2015PB
2011	2017	Dodge	Charger Pursuit	36-2035	36-2035PB

\*Push Bumper Elite required. Sold separately.

START	END	MAKE	MODEL	PUSH BUMPER ELITEXD	PIT BAR**
2015	2017	Ford	Expedition/SSV	36-53865	36-53865PB
2015	2017	Chevy	Tahoe/Suburban	36-53805	36-53805PB

\*\*Push Bumper EliteXD required. Sold separately.  
Note: Bumper drilling required.

FRONT-END PROTECTION

# ELITE - WING WRAPS -

A COMPLETE FRONT-END PROTECTION PACKAGE



The Elite Wing Wraps provide added front-end and headlight protection.

They connect to the pre-drilled Push Bumper and PIT Bar into a one-piece assembly. They feature welded cross bars (varies by application) and attach to the Push Bumper with a 7 gauge plate. They are also equipped with a 1-1/2" diameter vertical support bar to absorb impact in the event of a collision.

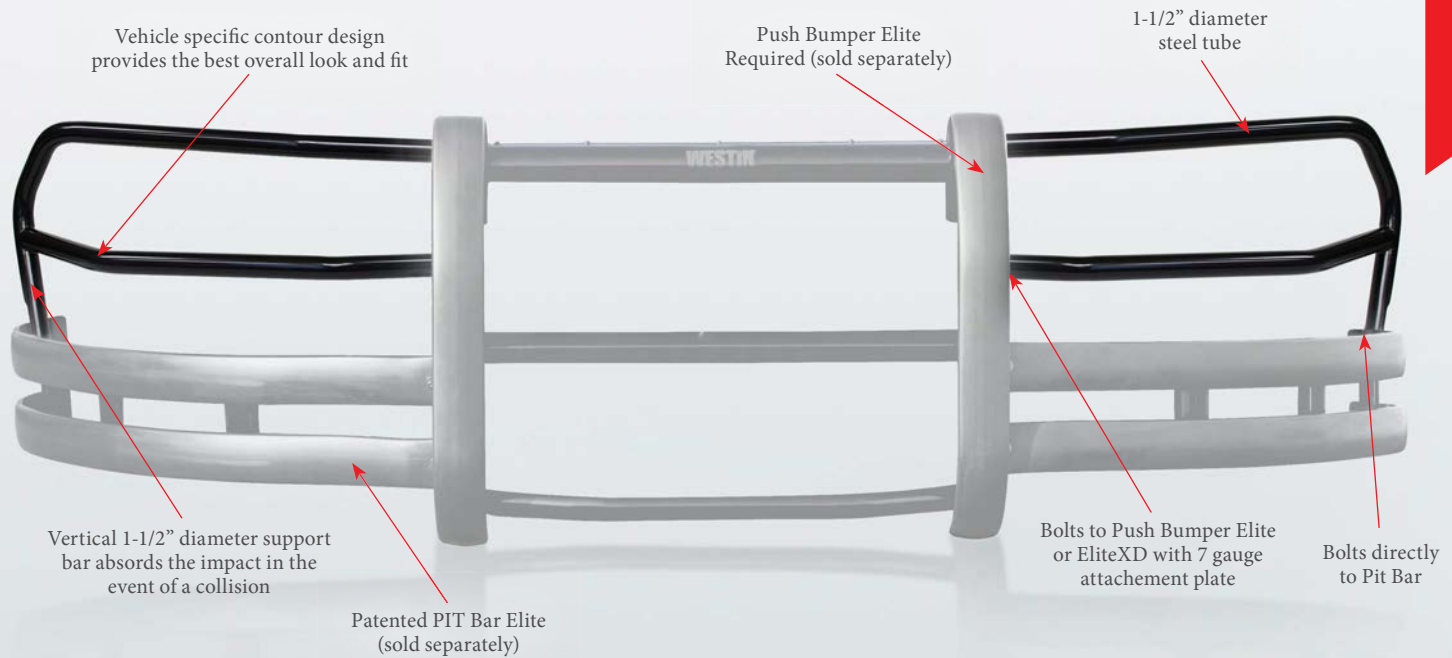


# ELITE WING WRAPS

A COMPLETE FRONT-END PROTECTION PACKAGE

## SPECIFICATIONS:

Finish: E-coated / Black Powder Coat  
Material: 14 Gauge HRPO Steel  
Visible Hardware: Black Plated Stainless Steel  
Warranty: 3 Year



36-2055W / Interceptor Utility  
Shown with Push Bumper Elite  
and PIT Bar Elite



36-52065W / Ford F-150  
Shown with  
Push Bumper EliteXD



36-53685W / Chevy Silverado  
Shown with  
Push Bumper EliteXD

START	END	MAKE	MODEL	PUSH BUMPER ELITE	PIT BAR	WING WRAPS*
2016	2017	Ford	Interceptor Utility	36-2055	36-2055PB	36-2055W
2012	2015	Ford	Interceptor Utility	36-2005	36-2005PB	36-2005W
2013	2017	Ford	Interceptor Sedan	36-2015	36-2015PB	36-2015W
2011	2017	Dodge	Charger Pursuit	36-2035	36-2035PB	36-2035W

\*Push Bumper Elite and PIT Bar required. Sold separately.

START	END	MAKE	MODEL	PUSH BUMPER ELITEXD	PIT BAR	WING WRAPS**
2015	2017	Ford	F-150/SSV	36-52065	N/A	36-52065W
2015	2017	Ford	Expedition/SSV	36-53865	36-53865PB	36-53865W
2013	2017	Ram	Ram SSV 1500	36-53545	N/A	36-53545W
2016	2017	Chevy	Silverado 1500	36-53875	N/A	36-53875W
2014	2015	Chevy	Silverado 1500	36-53685	N/A	36-53685W
2015	2017	Chevy	Tahoe/Suburban	36-53805	36-53805PB	36-53805W

\*\*Push Bumper EliteXD required. Sold separately.

HEAVY DUTY XTREME FRONT-END PROTECTION



# WINCH MOUNT - GRILLE GUARD -

MAXIMUM STRENGTH



Westin's HDX Winch Mount Grille Guard attaches directly to the vehicle's frame for maximum strength. The heavy duty design is ideal for the needs of today's public safety officer. It features welded uprights, 2" wraparound tubes and a full punch plate grille that allow emergency lights to be mounted. The MAX Winch Tray is pre-drilled to accommodate most medium frame winches.



# HDX WINCH MOUNT GRILLE GUARD

MAXIMUM STRENGTH



## OTHER ACCESSORIES AVAILABLE:



» Part No. 46-20055

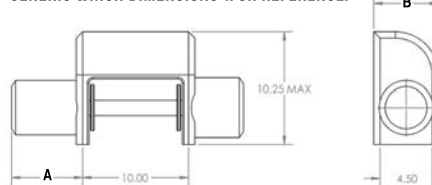
License Plate Re-locator



» Part No. 46-3005  
» 1 unit per package

Max® Tow Hook

### GENERIC WINCH DIMENSIONS (FOR REFERENCE)



### SPECIFICATIONS:

Finish: E-coated / Black Powder Coat

Material: HRPO Steel

Visible Hardware: Black Plated Stainless Steel

Warranty: 3 Year

START	END	MAKE	MODEL	HDX WINCH MOUNT GG	MAX WINCH DIM.	
					A	B
2016	2017	Chevy	Silverado 1500 <sup>9, 10</sup>	57-93875	6.5"	6.75"
2014	2015	Chevy	Silverado 1500 <sup>8, 9, 10, 11</sup>	57-93685	6.5"	6.75"
2011	2014	Chevy	Silverado 2500/3500HD <sup>1, 8, 9</sup>	57-93615	6.5"	6.75"
2015	2017	Chevy	Silverado 2500/3500HD <sup>9, 11</sup>	57-93785	6.5"	6.75"
2015	2017	Chevy	Suburban/Tahoe <sup>9, 10, 11, 14, 15</sup>	57-93805	6.5"	6.75"
2009	2017	Dodge/Ram	Ram 1500 <sup>7, 8, 9, 16</sup>	57-93545	6.6"	6.4"
2010	2017	Dodge/Ram	Ram 2500/3500 <sup>1, 8, 9</sup>	57-93555	6.5"	6.75"
2017	2017	Ford	F-250/350 Super Duty <sup>10, 12</sup>	57-93905	6.5"	7.0"
2015	2017	Ford	F-150 <sup>8, 9, 10, 12, 13, 14</sup>	57-93835	7.0"	6.5"
2011	2016	Ford	F-250/350 Super Duty <sup>8, 9</sup>	57-92375	6.5"	7.0"

### Footnotes:

1. Requires lower bumper grille trimming for install on 2010-14 models.
5. Drilling required.
7. Removal or trimming of plastic bumper insert required on vehicles that did not come with factory tow hooks.
8. Will interfere with "Adaptive Cruise (Speed) Control", or Forward Collision Warning Systems that feature grille mounted laser control sensors if equipped.
9. Factory tow hooks cannot be re-used.
10. Minor trimming of tow hook pockets required.
11. Will interfere with front parking sensors if equipped.
12. Will interfere with front camera if equipped.
13. Will partially block airflow to intercooler on EcoBoost models.
14. Will interfere with adaptive cruise control if equipped.
15. Trimming to front bumper plastic required.
16. Excludes Rebel model.

HEAVY DUTY

# HD HEADACHE - RACK -

DURABILITY AND PROTECTION



Westin's HD Headache Rack protects your rear window from potential damage due to load shifting. The louvered design keeps harmful sun rays out and protects the interior while giving you unobstructed visibility.



HEAVY DUTY

# HD HEADACHE RACK

DURABILITY AND PROTECTION



## SPECIFICATIONS:

Finish: E-coated / Black Powder Coat

Material: HRPO Steel

Visible Hardware: Black Plated Stainless Steel

Warranty: 3 Year



Welded Tie-Down Hooks



Accessory Mounting Tabs (4)



Angled louvers provide shade and protect rear window



Oversized Tool Box Bracket  
Part No. 57-8095

START	END	MAKE	MODEL	OVERALL HEIGHT	HD HEADACHE RACK
2015	2017	Ford	F-150 <sup>5</sup>	26"	57-8025
2004	2014	Ford	F-150 <sup>1, 4, 5</sup>	26"	57-8025
2008	2016	Ford	F-250/350/450/550HD Super Duty <sup>3, 4, 5</sup>	29"	57-8005
2002	2017	Dodge/Ram	Ram 1500 <sup>2, 4, 5</sup>	27 1/2"	57-8035
2003	2017	Dodge/Ram	Ram 2500/3500 <sup>2, 4, 5</sup>	27 1/2"	57-8035
2007	2017	Chevy	Silverado 1500/2500/3500HD <sup>1, 4, 5</sup>	26"	57-8025
1999	2007	Chevy	Silverado "Classic" 1500/2500/3500HD <sup>1, 4, 5</sup>	26"	57-8025

## Footnotes:

1. For use with toolboxes up to 70" wide.
2. For use with toolboxes up to 71" wide.
3. For use with toolboxes up to 72" wide.
4. Mount Kit PN# 57-8095 (black) may be used to accommodate larger tool boxes.
5. Drilling of bed required.



# **WESTiN<sup>®</sup>**

Public Safety Division

**PROTECTING THOSE**

---

# **WHO PROTECT US**

[WESTINPUBLICSAFETY.COM](http://WESTINPUBLICSAFETY.COM)

#### **CUSTOMER SERVICE / SALES**

Ph: 800. 345. 8476

Fax: 626. 813. 4890

E-mail: [westinpsd@westinautomotive.com](mailto:westinpsd@westinautomotive.com)

**7AM-4PM PST**

#### **WESTIN SALES / MARKETING**

Ph: 626. 960. 6762

Fax: 626. 960. 2055



SEARCH **#WESTINPUBLICSAFETY**  
AND STAY CONNECTED!



**320 W. COVINA BLVD. SAN DIMAS, CA 91773**

5.3892 | WPS13 | 092016

©2016 Westin Automotive Products, Inc. Printed in U.S.A.